

# Lake Sherwood Property Owners Association

## Firewise Community Assessment Refresh 2015



Submitted By:  
Amy Luebke  
Wisconsin DNR Division of Forestry  
Last updated: May 25, 2016



Division of Forestry



## INTRODUCTION

The Firewise Communities/USA program offers fire-prone communities a unique opportunity to implement Firewise practices tailored to the individual needs of their community. Firewise Community participants gain useful knowledge and skills to prepare for wildfire before it occurs and make progress towards maintaining a level of fire readiness.

## FIREWISE AT NFPA: A BRIEF HISTORY

Since 1985 there has been national recognition of the increasing numbers of homes being lost to wildfires. In 1986, federal agencies came together to address the issue with the National Fire Protection Association (NFPA) administering the project which focused on the education of firefighters and homeowners. The national Firewise Communities/USA Recognition Program rolled out in 2002. Today the program has over 1,000+ active communities in 41 states. Each community can address their specific wildfire safety needs using the flexible template of the Firewise Community/USA program. Communities work with partners, including state forestry and local fire departments, to organize, plan and conduct activities each year that improve wildfire readiness.

## SHERWOOD'S FIREWISE STORY

### Years: 2010 – 2015

An overview of the process to become a recognized Firewise Community was presented at Lake Sherwood's Fall General Membership meeting on September 5, 2009. The Lake Sherwood Property Owners Association voted to pursue Firewise Community USA status on October 5, 2009.



The Firewise Community Assessment on March 31, 2010 began at the Rome Town Hall with a review of background information on the Association and the area. The team then drove around the area to observe the overall construction and landscaping of the homes and to identify issues of concern. The community assessment report identified the wildfire-related characteristics of Lake Sherwood and the community's ignition potential.

Lake Sherwood created their Firewise Program Plan with goals to:

- Reduce hazard fuels on private parcels
- Address fuel loadings on community owned and multi-ownership properties
- Promote Firewise education and practices
- Promote Home Ignition Zone Assessments and mitigation practices

Lake Sherwood did their first Firewise project on April 10, 2010 with 19 volunteers working to reduce hazardous fuels in Sherwood Forest. They requested and were awarded Firewise

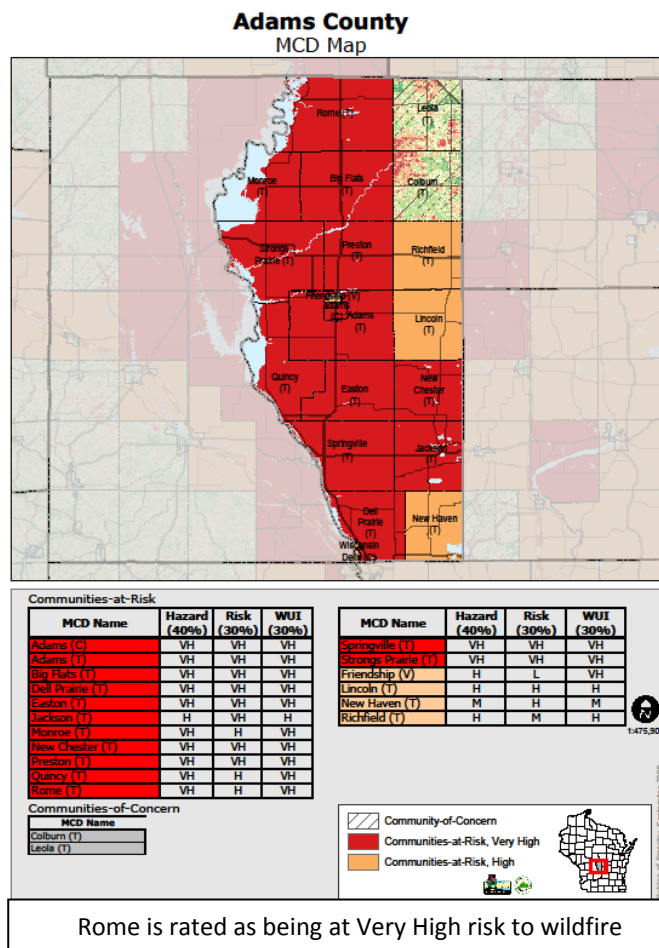
recognition status in 2010 with their recognition materials being presented on September 4, 2010.

### The Refresh Process

With five years already invested in the program, the Association initiated the refresh process. A team gathered to conduct a Firewise Community Assessment for Lake Sherwood on September 22, 2015. The results of that assessment are detailed in this report. The Firewise Assessment Team consisted of the following team members:

- Dave Trudeau, Sherwood Property Owners Association, Lincolnwood Subdivision Representative and Conservation Committee Chairman
- Chief John Frantz, Rome Fire Department
- Todd Pulvermacher, Forest Ranger, Wisconsin DNR, Wisconsin Rapids Service Center
- Amy Luebke, Wildland-Urban Interface Specialist, Wisconsin DNR, Wisconsin Rapids

During the assessment, past projects and information about the Association were reviewed and project priorities going forward were discussed. We reviewed the risk elements in the subdivision followed by a tour to see past projects, special features of the neighborhood as well as revisit the areas of risk. We toured Sherwood Forest, the evacuation route, the peninsula with its evacuation concern, the lodge and two beach clubs.



### **SITE DESCRIPTION**

Before we review the projects completed during the first 6 years of the program, let's revisit background information on Lake Sherwood.

### Location

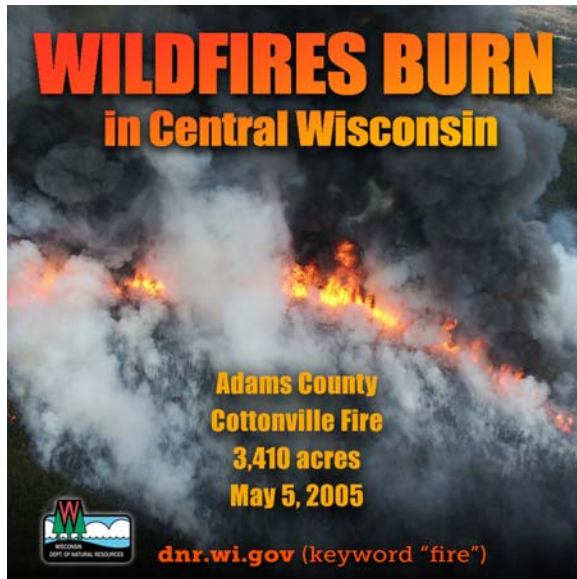
Lake Sherwood is located in the Town of Rome in Adams County in the area referred to as the Tri Lakes, which refers to Lake Sherwood, Lake Camelot and Lake Arrowhead. The topography is generally flat with some rolling topography at the south end of the subdivision.



### Wildfire Risk

The Town of Rome is designated by the DNR as being a community at very high risk to wildland fire in part due to the droughty soils and the kinds of trees that thrive there.

Lake Sherwood is quite wooded throughout with wildland fuels in close proximity to homes. The forest type mainly consists of mixed oak-pine forest. There are several blocks of pine plantation located throughout Sherwood as well as many miles of contiguous pine plantation both to the north and south of the subdivision.



Lake Sherwood falls in the Central Wisconsin Sands fire landscape which contains extensive areas of jack and red pine with dry, sandy and organic soils. There are extensive wildland-urban interface areas. There is a great history of and potential for a 10,000 + acre project class fire. There have been four fires greater than 2,500 acres since 1975. This landscape has a higher structural load than any of the other pine dominated landscapes in Wisconsin.

Although the last large fire in the nearby area occurred eleven years ago (the Cottonville Fire in 2005), the vegetative fuels certainly have the

ability to support large-scale wildfires more frequently when the weather conditions are dry.

Lake Sherwood is not likely to have a crown fire. The homes and yards provide a break in the continuity of the fuels, which helps, and there is not a continuous canopy cover to support an ongoing crown fire. The bigger threat to homes in Lake Sherwood could come from surface fires and embers blowing off nearby wildfires and landing in a receptive fuel bed around a home. Homeowners need to be aware of what they can do to protect their homes in that case.

In short, the potential for wildfires is great in the Town. As a Firewise Community, Lake Sherwood keeps a focus on planning, preventing and preparing for wildfires before they occur.

### Hazardous Fuels

When living in a fire prone area, one issue of concern is the amount of hazardous fuels, both on individual lots near homes as well as in the community overall. Hazardous fuel



Dead trees add to the fuel load available to carry a wildfire

refers to fuel loading, or the amount of material that will burn in a wildfire. It's anything that will burn and increase the intensity or longevity of a wildfire. It could mean the vegetation cover type of the area, such as the pine plantation that borders Lake Sherwood. It could mean firewood and wood mulch near a home. More commonly, it refers to standing dead trees, dead trees on the ground and piles of brush. It is dead wood that has accumulated to the point of elevating the risk to surrounding structures should it ignite.

Wood accumulation or fuel loading can be a concern because once ignited, it can burn for a long time, requiring a lot of resources to extinguish and monitor and can be a source of embers to ignite homes. When firefighters are forced to concentrate on "hot" spots like a burning brush pile, it can mean fewer resources to focus on containing the wildfire. This buildup of dead fuels can also provide fuel "ladders" which provide a path for a surface fire to get up into the crowns of trees where it can be more difficult to suppress.

Sherwood Forest was an unmanaged property. Especially with the influence of oak wilt, Sherwood Forest became a property loaded with burnable fuel. Before the Firewise program began in Lake Sherwood, the fuel loading was intense in this area, putting surrounding homes at risk. Since Sherwood doesn't have other commonly owned property, the Firewise Committee has focused on the now Town-owned property of Sherwood Forest for their Firewise projects.

People are making an effort to clean up their private properties as well. In 2010, the Town passed a nuisance ordinance related to dead trees and brush. People are able to drop off brush at the Transfer Site for free. Since the nuisance ordinance was first publicized, usage of the transfer site has exponentially increased. People are also taking advantage of the curbside brush pick up offered by the Town twice a year. In spring 2016, curbside pick-up was offered on the east side of the Town of Rome, which includes Lake Sherwood. There was participation from 617 properties or a participation rate of 25%.



**Sherwood Forest  
BEFORE**

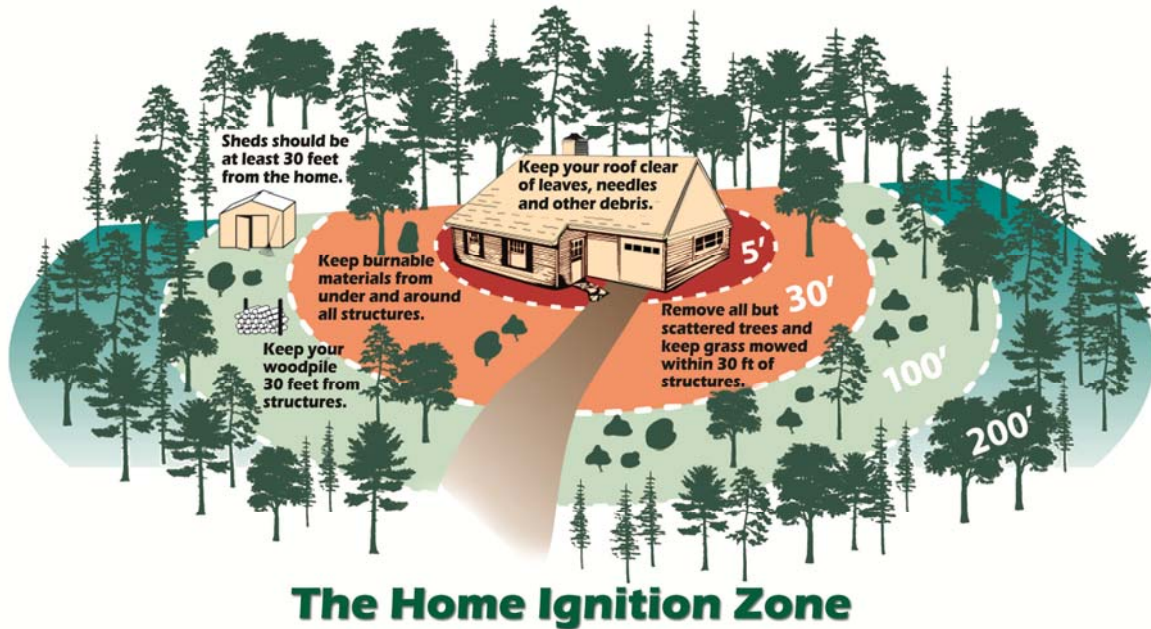


**Sherwood Forest  
AFTER**



### Structure Ignitability

Homes that are properly prepared can survive wildfire, even without help from firefighters. We call it being firewise. It involves construction, landscaping and maintenance of a home in such a way that it reduces the risk of an ember finding a productive place to land on a property. When buildings are maintained to be Firewise, it allows firefighters to concentrate on fighting the wildfire, which ultimately saves more properties.



Homes in the tri lakes area are dense. There is the potential in some areas for fire to spread from structure fire to structure fire where homes are in close proximity to each other. Because of the number of homes concentrated in the area, there is the potential for hundreds of homes to be threatened at the same time. It's important for homeowners to understand that with limited resources, firefighters do triage and make decisions about where to put their resources. They have to choose which driveways to pull in to. Wildland firefighters are trained to focus



their energies where they can get the biggest bang for their buck. In other words, they protect the homes where homeowners have already gone to the effort of making them firewise.

The Assessment Team observed homes as part of the tour of the area. Many homes in Lake Sherwood are well-maintained with green, mowed lawns and defensible space around them. Even so, there are usually small adjustments that could help better prepare a home for wildfire, such as dry oak leaves near the base of the house and wood mulch around the perimeter of the home. We saw some garages that would not be considered Firewise due to proximity to surrounding fuels. We also saw some great Firewise practices in place like firewood stored 30 feet away from the home, rock mulch around the home, and 30 feet of defensible space with nice green, mowed lawns.

### Subdivision Design

Lake Sherwood is a lake community with homes along much of the shoreline.

- Construction in Lake Sherwood began in 1967
- There are 26 additions and 17 beach clubs
- Lake Sherwood is 246 acres
- 90% of onshore lots are developed
- 20% of offshore lots are developed
- There are 892 lots in Lake Sherwood with 457 homes
- Approximately 668 property owners, about half of which are dues-paying association members
- Fewer vacant lots than other subdivisions
- Limited common property compared to Camelot and Arrowhead
- About 30% of the residents are permanent, year round residents with the remaining 70% being seasonal.
- The purposes of the Association are to preserve, maintain and improve amenities of the Association, the value of Lake Sherwood property, the water quality of Lake Sherwood and the ability of Members to enjoy their property.



### Existing Opportunities for Outreach

Time of Year	Outreach	Notes
Winter (Dec, Jan, Feb)	Newsletter (Fall/Winter)	Content due in September
Spring (Mar, Apr, May)	Newsletter (Spring)	Content due: in February
	General Membership Meeting	Saturday of Memorial Day Weekend
Summer (June, July, Aug)	Newsletter (Summer)	Content due in May
	LSPOA 4 <sup>th</sup> of July Craft Show	At Rome Fire Department
Fall (Sept, Oct, Nov)	General Membership Meeting	Saturday of Labor Day Weekend
Year round	Wisconsin Rapids newspaper	Daily Tribune
	Rome Cable Channel	Channel 300
	Board Meetings	1 <sup>st</sup> Saturday each month at 10:00 a.m.
	Website	Website updated regularly

### Firefighting Capability

Fire protection during wildfires can be complicated due to the potential for many structures to be threatened at one time and the need to prioritize in order to maximize use of resources. In a wildfire scenario, firefighters are training to do the most good they can. They will protect the homes that they can most easily get to and safely protect.



- Water Supply: Although there are no fire hydrants within Lake Sherwood, Chief Frantz reports that there is adequate access to water just to the north and east of the subdivision in Lake Camelot.
- Distance to Fire Department: In the event of a wildfire, the Rome Fire Department and the Wisconsin DNR would provide suppression response. Lake Sherwood falls within the DNR's Nekoosa Fire Response Unit, stationed at the Wisconsin Rapids DNR Service Center, located approximately 10 miles away from Lake Sherwood. The Rome Fire Department is less than 2 miles away. Understanding emergency response time will encourage homeowners to examine what they can do to support firefighters because it takes time for emergency services to arrive on scene. For example, to get to Royal Crest in Lake Sherwood takes about 7-8 minutes from the fire station if firefighters happen to be at the station. If volunteer firefighters get paged from home, it could take 20-30 minutes for firefighters to reach a home. That's why it's so important for homeowners to do their part ahead of time.
- Roads & Access: State Highway 13 is a main road through the Town. County and Town roads also provide access to the area around the lake. Access to Lake Sherwood is from Kings Way, 10<sup>th</sup> Avenue, Apache Avenue and County Highway D. The primary roads in the area are very good. Lake Sherwood includes many cul de sacs, which could potentially impede maneuverability of fire engines during a smoky, congested wildfire response.



Small cul de sacs challenge maneuverability of fire engines



- Ingress/egress (evacuation): The Sherwood Peninsula has only one way in and one way out of the subdivision which could result in difficulty evacuating the public while simultaneously getting firefighters into the area. Access could potentially be cut off in two different places in Lake Sherwood. The juncture of Leisure Lane & Kings Way is one vulnerable intersection and at the dike off of Yeoman which includes Lake Camelot and Lake Sherwood property is another vulnerable place.
- Driveway Access: There are still some long, narrow driveways in Lake Sherwood and there are those that have overhanging vegetation that could impede emergency vehicles. But for the most part, driveway access is not an issue in Lake Sherwood. The driveways are paved, short, and straight with adequate clearance from surrounding vegetation. For those few that do pose a problem, property owners should be aware that fire departments may not be able to commit resources to their property. Before entering a property, firefighters must make sure that they have an escape route. They must put their own safety first.



Well-marked evacuation route

## Community Wildfire History for Town of Rome (2006-2015)

- There have been 67 wildfires in the Town of Rome burning approximately 31.36 acres.
- Out of those 67 wildfires, 61 fires (91%) were less than one acre in size. Four fires (6%) were between 1-5 acres in size. Two fires (3%) were larger than 5 acres in size.
- The largest fire was a 13 acre fire.
- A total of 36 structures were saved due to suppression efforts; 2 structures were lost.
- One structure was lost in 2007 in a .1 acre wildfire.
- The other structure lost was in 2010 to a 0.03 acre wildfire which was intentionally set.
- The leading cause of wildfires was debris burning (25%) followed by equipment (19%). This follows statewide trends.
- 58% of the fires occurred during the months of March, April and May.
- Out of the 67 fires, at least 33 of them (50%) were human-caused and therefore could have been prevented.

**Town of Rome Wildfire Causes 2006-2015**

	#	%	Preventable?
Debris Burning	17	25%	Yes
Equipment	13	19%	No
Miscellaneous	13	19%	Not sure
Power Line	6	9%	No
Fireworks	6	9%	Yes
Incendiary (excite, pest)	4	6%	Yes
Campfire	4	6%	Yes
Structure Fire	2	3%	No
Experimenting with Fire	1	2%	Yes
Ash Disposal	1	2%	Yes
Smoking			Yes
Lightning			No
Playing with Matches			Yes
<b>TOTAL</b>	<b>67 fires</b>	<b>100%</b>	

**Town of Rome  
2006-2010**

	# Fires	Total Acres
2006	6	0.40
2007	11	0.96
2008	7	0.30
2009	7	0.48
2010	9	20.18
<b>TOTAL</b>	<b>40 fires (60%)</b>	<b>22.32 acres (71%)</b>

**Town of Rome  
2011-2015**

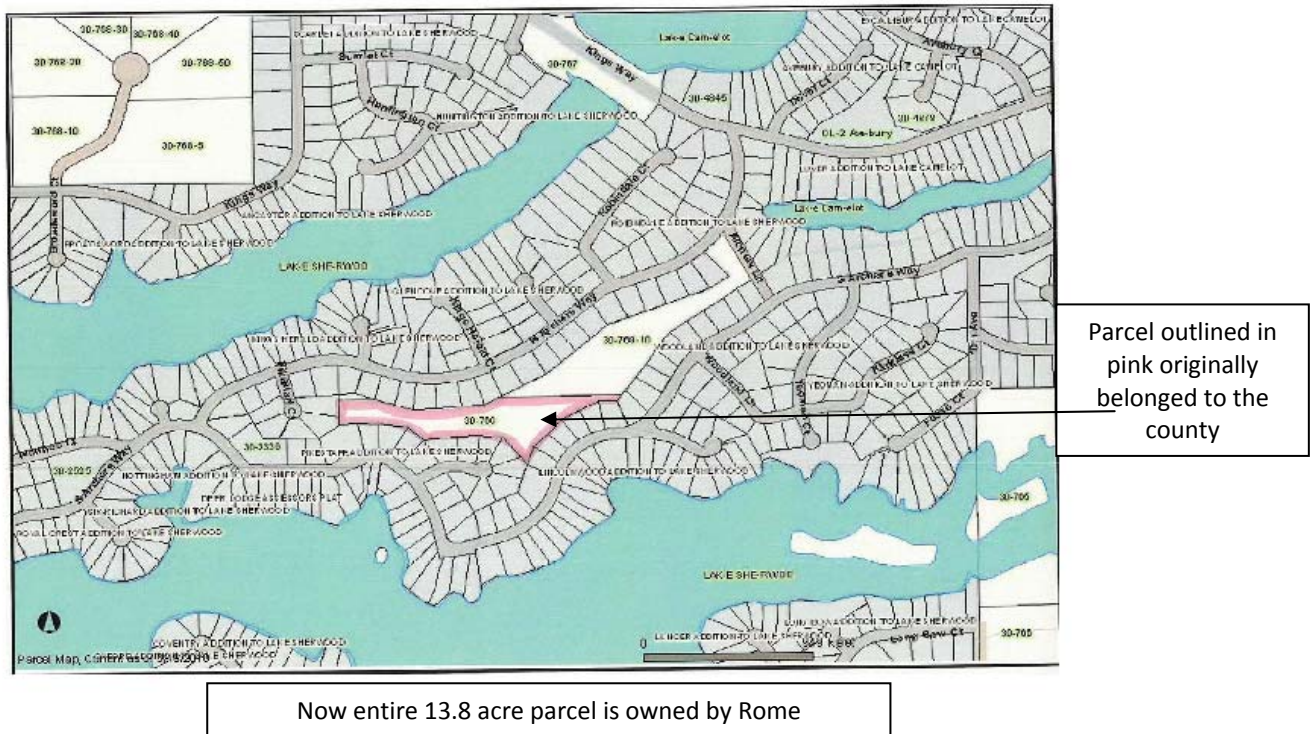
	# Fires	Total Acres
2011	3	0.05
2012	10	4.46
2013	4	0.49
2014	3	3.0
2015	7	1.04
<b>TOTAL</b>	<b>27 fires (40%)</b>	<b>9.04 acres (29%)</b>

**Town of Rome Wildfires By Season 2006-2015**

Season	Number	Percentage
Winter: Dec, Jan, Feb	1	2%
Spring: Mar, April, May	39	58%
Summer: June, July, Aug	22	33%
Fall: Sept, Oct, Nov	5	7%
<b>TOTAL</b>	<b>67 fires</b>	<b>100%</b>

## LAKE SHERWOOD PROPERTY OWNERS ASSOCIATION

The Property Owners Association got its start in 1969. Membership and paying dues is voluntary. About half of the property owners are dues-paying members. The Board of Directors consists of a representative from each of the 26 additions. Four of these representatives make up the Executive Board. The Board meets on a monthly basis.



There are no association-owned common areas. Sherwood Forest is a 13.8 parcel of green space located on the Lake Sherwood peninsula between North and South Archers Way, with foot access from Archers Lane. It was turned over to LSPOA by developer N.E. Isaacson & Associates in 1969. However, the deed was not properly transferred and recorded. The property is now owned by the Town of Rome.

- 13.8 acre Sherwood Forest owned by Town of Rome on the Sherwood peninsula
- The Association has by-laws and Protective Restrictions and Covenants.
- They have one permanent employee at the lodge, part time maintenance staff, and seasonal volunteers and employees as needed
- The Association runs Lake Sherwood Lodge which offers food, music and events. Sherwood also has docks in the water and sells gas to boats



- There are 17 beach clubs. In the past, the Association managed them. Now the owners with rights to the beach clubs maintain them. One of the beach clubs formed their own association.
- Regular Association communication includes:
  - Website: the website is updated regularly
  - General Membership Meetings: Two per year (Saturday morning of Memorial Day Weekend at 10:00 a.m. and Saturday of Labor Day weekend at 1:00 p.m.)
  - Dues Letter: Mailed out in January of each year.
  - Newsletters: There are three newsletters per year. The spring issue comes out in March (content due in February), the summer issue comes out in July (content due in May) and the fall/winter issue comes out in October (content due in September).

### **SHERWOOD FIREWISE COMMITTEE**

Firewise falls under the Lake Sherwood Conservation Committee as of March 6, 2010. The Sherwood Firewise Committee is also active in the Town of Rome Wildfire Mitigation Working Group which updates and implements the Rome Community Wildfire Protection Plan (CWPP). The Rome CWPP promotes education of wildfire risks, emergency preparedness and reduction of hazardous wildfire fuels.

### **FIREWISE PROJECTS 2010-2015**

#### **Sherwood Forest**

**BACKGROUND:** Sherwood Forest is owned by the Town of Rome. Lake Sherwood firewise volunteers have been granted permission to remove hazardous fuel from this parcel as it is surrounded on all sides by structures that would be threatened should a wildfire ignite. Reducing the fuel load on this property has become the focus of Sherwood's annual Firewise projects. When work began, the property was loaded with scattered dead and down trees which made passage through the area nearly impossible.



Volunteers working on clean-up  
of Sherwood Forest

**FIREWISE DAYS:** The Conservation Committee (Firewise Committee) began a clean-up effort of Sherwood Forest in 2010. The wood that is removed from Sherwood Forest is hauled away by the Town of Rome, whose expenses are also covered using hazard mitigation funds. The Firewise Committee schedules a 3-hour volunteer work event twice each year during the months of April and October to remove dead trees, limbs, and brush from Sherwood Forest. They end their work time with a social and lunch. For the last few work days, 10 volunteers has been the average participation. With those volunteers bringing their ATVs, tractors and chainsaws from home, it has been amazing to see the amount of work accomplished with just 10 people.

**PROGRESS:** Over the years, at least 200 dead trees have been removed from the property. It will probably take another two more years to make it through the whole property for the first time. As a next step, the Conservation Committee plans to propose a Master Plan for the Sherwood Forest property. At that point, Sherwood plans to either seek a long term Management Agreement with the Town of Rome or request that the Town consider returning the property to the Lake Sherwood Property Association.

**ACCESS:** There is only one public access to Sherwood Forest. Apart from that one narrow access from Archer's Lane, Sherwood Forest is landlocked with private property and residences all around it. For several years, the Firewise Committee had permission to cut through a private property on Blue Boar but now that the property is up for sale, access is no longer allowed. Now that the Firewise volunteers have to start on Archer's Lane and cross all the way across the property, their efforts will include a lot more time spent hauling the wood out.

**GRANT FUNDS:** The Sherwood Firewise Committee has sought grant funds through the DNR's Hazard Mitigation Program to support the work completed on Sherwood Forest. Grant funds have contributed on average \$2100/year. In 2010-2015, over \$12,600 was invested in reducing wildfire risk in Lake Sherwood. While Lake Sherwood residents provide volunteer labor to this clean-up effort, the grant reimburses expenses for equipment use, including ATVs, chainsaws, tractors, and some commercially contracted equipment.



Accumulation of brush in Sherwood Forest



Stumps give an idea of where dead trees stood before Firewise project work was completed in Sherwood Forest

### **Curbside Brush Removal**

The Town of Rome has obtained grant funding since 2008 to assist in the cost of curbside brush removal which has been offered every spring and fall in the Town since then. Sherwood has benefited from this town project as curbside brush pick up has been offered in Lake Sherwood periodically since 2008.

Rome's Curbside Chipping/Brush Pick Up in Lake Sherwood	
Year	Planning Unit Name
2008	Fall 2008: Lake Sherwood – East and West Queen's Way
2009	n/a
2010	n/a
2011	Fall 2011: North Sherwood
2012	Spring 2012: Sherwood Fall 2012: Sherwood: East and West Queen's Way
2013	n/a
2014	East side of Town – all of Sherwood included
2015	n/a

### Evacuation Route

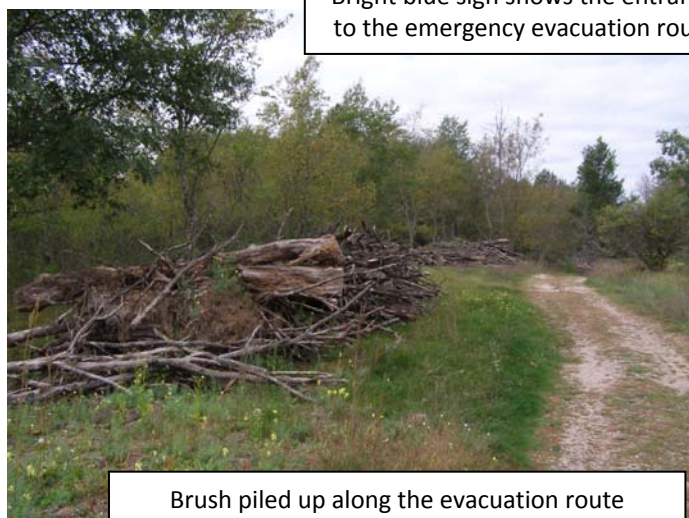
Part of Lake Sherwood is located on a peninsula with only one way in and one way out. Since the beginning of our fire planning in the Town of Rome, this area has been raised as a concern for public safety. Fortunately, the County dam provides an escape route where the primary access point becomes inaccessible. It is only to be used in the case of an emergency. The evacuation route is gated but the Rome Fire Department has keys.

As a mitigation project, the Town added signage along the route to direct people to the entrance. The evacuation route would be easily missed if it were not for the signs. Also as a part of this effort, the Town of Rome created an evacuation flyer that has now gone out to everyone owning property in Lake Sherwood.

The amount of hazardous fuel along the emergency route was introduced as a concern at a Rome Community Wildfire Protection Plan meeting. Dead trees and brush on the ground could impede the passage of vehicles along the two track road. The amount of hazardous fuels on the ground, should a wildfire burn in the area, could make it perilous for people to leave using the escape route. The amount of fuel on this property could also put neighboring homes at risk.



Bright blue sign shows the entrance to the emergency evacuation route



Brush piled up along the evacuation route



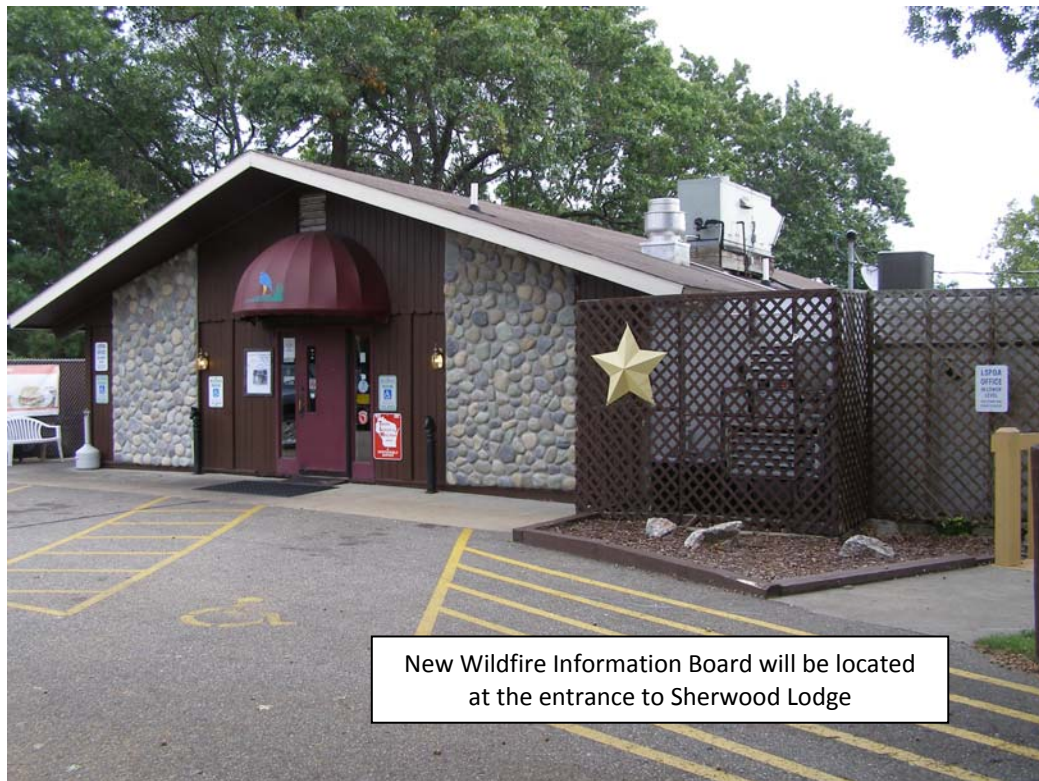
The Sherwood Firewise Committee was a good fit to follow up on this concern with the County due to their proximity. They approached the County and got permission to do some fuels reduction work. The project went in their 2014 project proposal. Beginning in Fall 2014, Sherwood Firewise volunteers began dragging brush to the road and cutting dead trees and piling branches. The effort continued as part of their firewise project in spring 2015. In June of 2015, a subcontractor piled dead wood on the ground and removed it from the site. Permission for Lake Sherwood to work on this property was rescinded by the Adams County Property Committee on February 8, 2016.

### **Website**

During the spring of 2015, Sherwood's website was updated to include room for wildfire information. It can be found under the LSPOA tab under Conservation. The Association now has a much easier process to update information more frequently and in-house. Currently, there is information on burning permits, the Firewise Program and the Sherwood Forest project.

### **Wildfire Information Site**

The Firewise Committee plans to install a Wildfire Information Board outside the lodge. The supplies have been purchased already for the 4 x 4 foot sign. The sign would be installed in that mulch area by the gold star.



## WILDFIRE RISK & RECOMMENDATIONS FOR LAKE SHERWOOD

WILDFIRE RISK	RECOMMENDATIONS
<p><b>RISK ISSUE: FUEL LOAD</b></p> <p>In a fire prone area like Lake Sherwood, one way to reduce the risk is reduce fuel loading on private properties and throughout the subdivision.</p>	<p><b>REDUCE HAZARDOUS FUELS</b></p> <ul style="list-style-type: none"> <li>- promote Rome's nuisance ordinance related to dead trees and brush</li> <li>- continue fuels reduction work on Sherwood Forest</li> <li>- promote Town of Rome curbside brush pick up projects</li> <li>- ensure subdivision covenants don't prohibit the removal of dead trees and brush from private property</li> </ul>
<p><b>RISK ISSUE: LACK OF AWARENESS</b></p> <p>People don't understand the risk level in the Town of Rome. That lack of understanding may cause them to burn outdoors when they shouldn't.</p>	<p><b>REDUCE WILDFIRE IGNITIONS BY RAISING AWARENESS OF RISK &amp; FIRE PREVENTION TOOLS</b></p> <ul style="list-style-type: none"> <li>- raise awareness of the very high risk level in the Town of Rome</li> <li>- raise awareness that spring is wildfire season</li> <li>- educate people on the need for burning permits and checking burning restrictions</li> <li>- promote the transfer site for brush drop off as an alternative to burning</li> </ul>
<p><b>RISK ISSUE: STRUCTURAL IGNITABILITY</b></p> <p>There is a time component to wildfire response and there are limited resources. We can bring in firefighters from surrounding areas, but it involves travel time. That's why it is so important to make sure your home is Firewise. Your home may need to survive on its own before firefighters can arrive to check on it.</p>	<p><b>REDUCE STRUCTURAL IGNITABILITY THROUGH EDUCATION ON FIREWISE PRACTICES</b></p> <ul style="list-style-type: none"> <li>- Review covenants and other guiding documents to ensure they support Firewise recommendations.</li> <li>- Promote firewise recommendations to homeowners in Sherwood using methods that make the most sense for Sherwood (for example, the planned information board and the newsletter).</li> </ul>
<p><b>RISK ISSUE: FIREFIGHTING CAPABILITY</b></p> <p>It takes time for firefighters to arrive on scene after being paged to a wildfire. That's why it's critical to call 911 sooner rather than later. That's also why it's</p>	<p><b>HELP FIREFIGHTERS</b></p> <ul style="list-style-type: none"> <li>- Educate folks to call 911 immediately in the event their burn escapes or they see a wildfire.</li> <li>- Encourage homeowners to provide proper</li> </ul>

important for homeowners to make sure their homes are firewise. A firewise home can survive on its own until firefighters arrive on scene to help. Visible address numbers and adequate height and width clearance also speed emergency response.	driveway access to their properties as well as address signage. <ul style="list-style-type: none"> <li>- Encourage homeowners to do their part to prepare their homes for wildfire – be firewise.</li> </ul>
<b>RISK ISSUE: EVACUATION</b>  There is a concern for the ability to safely evacuate the Sherwood peninsula in the event of a wildfire because there is only one way in and out.	<b>PROTECT LIVES THROUGH EVACUATION</b> <ul style="list-style-type: none"> <li>- Promote homeowner preparedness related to evacuation planning so they know to evacuate immediately and are prepared to do so.</li> <li>- Partner with the County to ensure the emergency evacuation route stays passable.</li> </ul>
<b>RISK ISSUE: DRIVEWAY ACCESS</b>  There are still some issues with driveway access in Lake Sherwood but overall this is not a huge issue here.	<b>EDUCATE ON EMERGENCY VEHICLE ACCESS</b> <ul style="list-style-type: none"> <li>- Promote the need for proper driveway clearance and address signage to speed emergency response. Fire departments will not commit resources to individual homes if they can't ensure firefighter safety.</li> </ul>

## NEXT STEPS

After Sherwood POA receives and approves this assessment report, the next step is for Sherwood to refresh their Firewise Program Plan to describe their planned projects for the next five years, 2016-2010.

In creating a list of projects, keep in mind the following:

- consider existing opportunities to get information out
- take into consideration methods for communication that will reach resident and non-resident alike
- use products for outreach that help people see that wildfire can happen to them



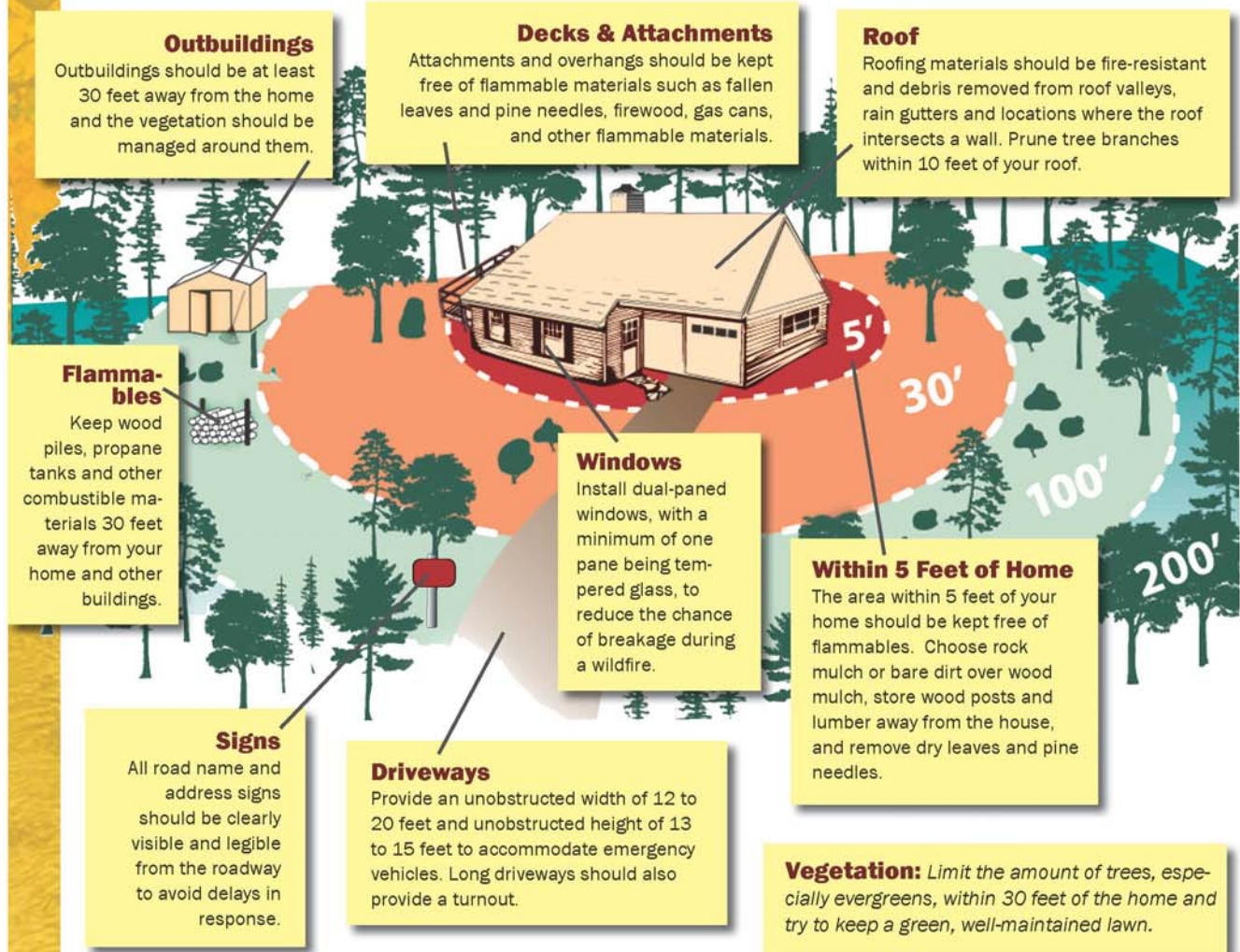
<b>Table 1. Hazard Mitigation Funds for LSPOA 2010-2015</b>		
<b>Year</b>	<b>Projects</b>	<b>Volunteers/Amount Fuel</b>
2010 \$2,568.88	Spring 2010 Firewise Project took place 4/10/10 5/11/10 - Paid to Rome for pick-up: <b>\$2,227.76</b>	22 volunteers for 5 hours 26 truckloads ¾ acre
	Fall 2010 Firewise Project took place 10/23/10 11/19/10 - Paid to Rome for pick up: <b>\$206.12</b> 12/14/10 – equipment rental (chainsaw): <b>\$135</b>	5 volunteers, 4 hours
	Spring 2011 Firewise Project took place 4/9/11 6/21/11 - Equipment rental & supplies <b>\$437.82</b>	18 volunteers, 5 hours 136 cubic yards, ¾ acre
2011 \$2,168.24	Fall 2011 Firewise Project took place 10/20/11 11/16/11 - Pay Rome to pick up wood <b>\$288.62</b> 12/8/11 - Equipment rental <b>\$1441.80</b> (includes M&M)	11 volunteers
	2/7/12 - DCM picked up piles created by M&M <b>\$480</b> 2/21/12 - <b>\$120.16</b> to Rome for additional work	n/a
	Spring 2012 Firewise Project took place 4/21/12 Sherwood Forest equipment rental <b>\$665.70</b> Pay Rome for pick up <b>\$171.64</b>	27 volunteer hours 7 people with equipment
2012 \$2,572.62	Fall 2012 Firewise Day took place 10/27/12 11/20/12 - Equipment rental <b>\$389.84</b> 10/31/12 - DCM hauled brush to road <b>\$400</b> 11/2/12 - Fall 2012 Rome picked up brush <b>\$345.28</b>	27.5 volunteer hours
	Spring 2013 Firewise Day took place on 4/20/13 5/31/13 - Spring 2013 equipment rental <b>\$292.66</b> 7/1/13 - Supplies for info board <b>\$149.56</b>	24 volunteer hours
	Fall 2013 Firewise Day took place on 10/26/13 11/13/13 - Fall 2013 equipment rental <b>\$562.66</b>	39.5 volunteer hours
2013 \$1,004.88	Spring 2014 Firewise Day took place 4/26/14 4/26/14 - Spring 2014 equipment rental <b>\$174.51</b> 5/16/14 - Rome to pick up fall 13 and spring 14 <b>\$714.08</b> 6/19/14 - Supplies for info board and other projects <b>\$270.85</b>	8 volunteers 28 volunteer hours
	Fall 2014 Firewise Day took place on 10/11/14 11/24/14 - Fall 2014 Rome pick up <b>\$115.00</b> 12/16/14 - Fall 2014 equipment rental <b>\$627.90</b>	28 volunteer hours
	Spring 2015 Firewise Day took place on 4/18/15 5/21/15 - Sp 2015 Rome pick up <b>\$172.50</b> 5/21/15 - Sp 2015 equipment rental <b>\$596.66</b> 6/17/15 - June 15 DCM clean-up of evacuation route <b>\$570</b>	34 volunteer hours
2015 \$2,419.36	Fall 2015 Firewise Day took place on 10/24/15 11/20/15 - Fall 2015 Equipment rental <b>\$1,080.20</b> (includes Rome expense)	16 volunteer hours
<b>TOTAL \$12,636.32</b>		
During 6 year time period, yearly average \$2100/year invested in Lake Sherwood		

## Reduce the ignitability of your structure and be Firewise

# Small steps are the key to a Firewise home!

Improving your home's chance of surviving a wildfire can seem like an overwhelming task – one that you may feel is impossible to achieve. Not necessarily so! Research shows that flying embers (firebrands) and creeping surface fire are significant contributors to the loss of homes to wildfires...

sometimes hours after the fire has passed. To begin making your home and property "Firewise," start with the structures on your property and move out as time allows. Keep in mind that anything attached to a structure (deck, fence, overhangs, etc.) is part of the structure.



**The home ignition zone** is your home and its surroundings out to 100-200 feet. In this area, vegetation and personal property should be managed and maintained to reduce the wildfire threat and improve the likelihood of your home surviving with little or no assistance from firefighters.





**Can firefighters get to your home?**

